

# aCOLyte 3 HD

## Software Installation - Quick Guide

1

### Start PC

- ➔ Log onto PC as an Administrator and shut all running software down

2

### Insert software source

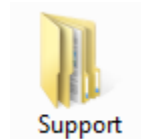


Setup.exe

- ➔ Insert the software source, unzipping if the installation set is zipped. Run the file Setup.exe

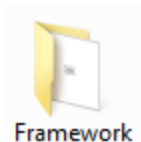
The PC may require a Windows update (particularly if the PC is Windows XP, Windows Vista or Windows 7). If you are presented with a message stating **“This application needs Microsoft .Net Framework 4.0 full version which is not yet installed. This can be found in the Support directory.”**, then follow step 3, otherwise proceed to step 4.

### Support folder



Support

- ➔ Open the Support folder



Framework

- ➔ Open the Framework folder



SetupFramework.exe

- ➔ Run SetupFramework.exe and follow the on-screen instructions, performing a system restart if update requested



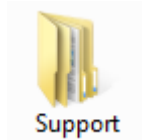
Setup.exe

- ➔ Run Setup.exe once again and follow the on-screen instructions

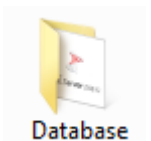
3

aCOLyte3 HD software utilises Microsoft's SQL Server. If this is not already present on the PC you will receive a message stating "This application requires SQL Server Express or SQL LocalDB Express, neither of which is yet installed on this computer. Do you wish to continue with the installation of aCOLyte3 software (Press OK) or cancel and install a database engine?" If you already have a SQL server at a remote location press OK, otherwise, press Cancel and follow step 4.

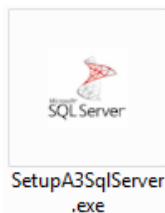
## 4 Install SQL Server



➔ Open the Support folder



➔ Open the Database folder



➔ Run SetupA3SqlServer.exe (see SQL Installation QG for details within Installation -> Manuals-> Quick Guides) and on completion perform a PC restart

**PLEASE NOTE:** SQL LocalDB Express is designed for a single PC user. A single user should log onto the PC and, if there is more than one user running the aCOLyte3 HD software, they should enter their details within the aCOLyte3 software. **If more than one user is going to log onto Windows on the PC running aCOLyte3 software, you should install, and use, SQL Server Express.**

## 5



Setup.exe

➔ Run Setup.exe once again and follow the on-screen instructions (see aCOLyte 3 HD Full Installation Guide for details within Installation -> Manuals-> Quick Guides)

## 6

## Connect the aCOLyte3

➔ Connect the power cord to the aCOLyte 3 HD and plug the unit in

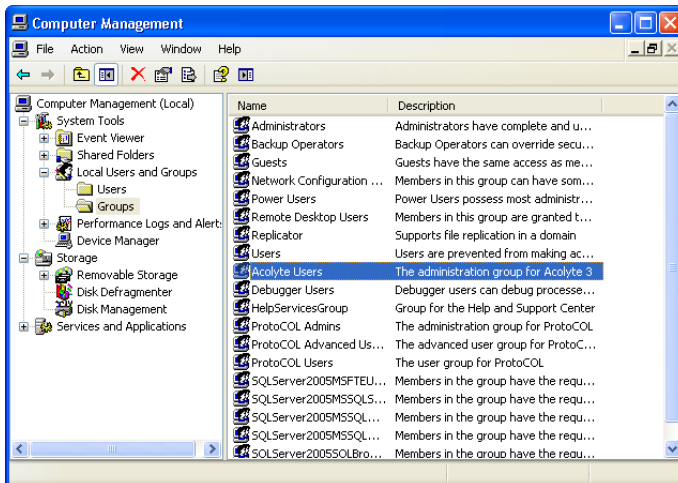
➔ Connect the camera USB cable from the aCOLyte 3 HD unit to a spare USB port in the PC

## Adding users to SQL server

7

The following steps need to be carried out when logged in as an Administrator.

When aCOLyte 3 HD is installed users need to be a member of one or more of these groups.

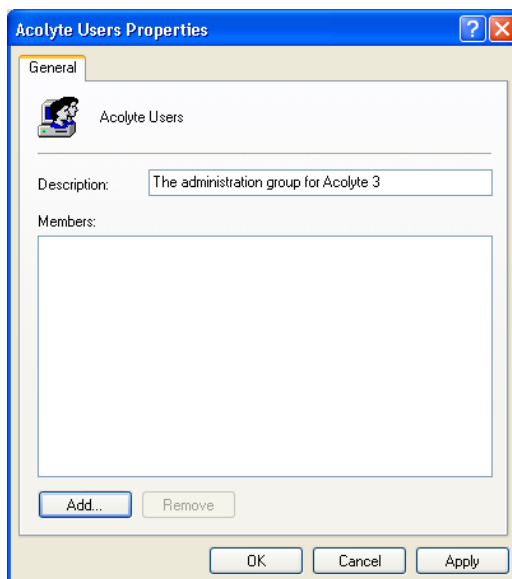


➔ From the Windows Control Panel select Administrative Tools then Computer Management

➔ Expand (+) local users and groups then click on Groups

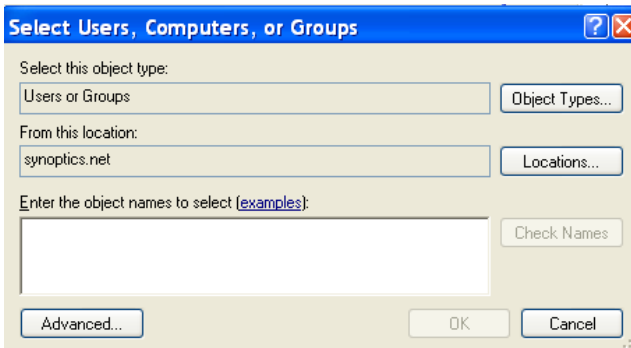
➔ Right click on aCOLyte User Properties

➔ Click Add to Group to add users

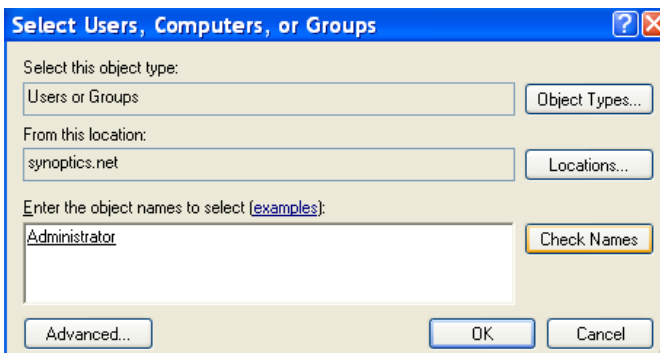


➔ Click Add

## 8 Adding users to SQL server (cont.)



→ To add a single user add their Windows log in name



→ Click Check Names

→ Close computer management window

**aCOLyte 3 HD is now ready to be used**

### CONTACT SYNBIOSIS:

EUROPE:  
Tel: +44 (0)1223 727125  
Email: [support@synbiosis.com](mailto:support@synbiosis.com)

[www.synbiosis.com](http://www.synbiosis.com)

USA:  
Tel: 800 686 4451/301 662 2863  
Email: [support@synbiosis.com](mailto:support@synbiosis.com)

a3si0318