

# ProtoCOL 3 OPKA - Batch Set-Up Quick Guide

## 1 Start ProtoCOL 3 software

Enter



➔ Log on to ProtoCOL 3

## 2 Position plate

➔ Insert the plate holder, ensuring the plate holder that gives the best contrast between the zone and background is used

➔ Place plate onto plate holder

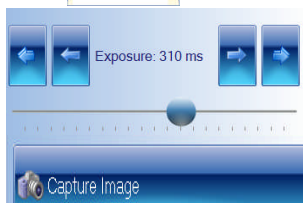
## 3 Capture image

Click



➔ Select the image tab and check the live box

Slide



➔ Adjust the exposure by increasing/ decreasing the sliding scale

Click

➔ Capture image

## 4 Create batch

Click



➔ Click New Batch

## 5 Plate configuration

Select



➔ Select Plate Configuration to set plate size and sample volume. Default are circular plate, 90mm, sample volume 1mL. Change if necessary

## 6 Choose an application

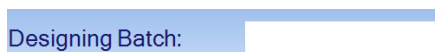
Select



➔ Select OPKA

## 7 Name the batch

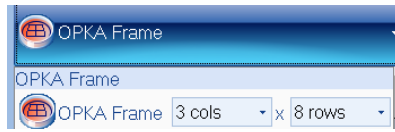
Enter



➔ Name the batch

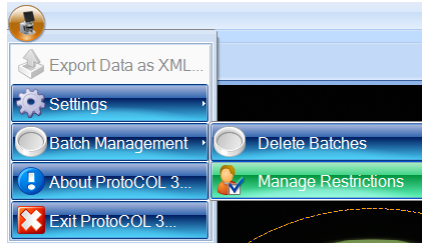
## 8 Set frame

Click



Default 3 x 5 grid change if necessary by pressing OPKA frame button using the drop-down menu and select number of columns and rows

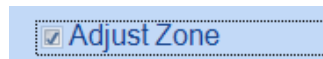
Click



➔ Adjust the frame by dragging the outer edges

➔ To move individual zones, click on the ProtoCOL icon, select Batch Management and click Manage Restrictions

Check



## 9 Total plate count

Click



Select

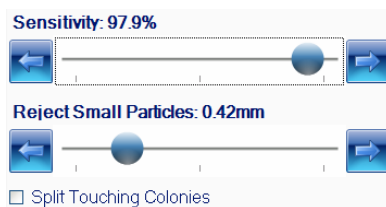
➔ Position counting frame over the colonies to be counted

➔ Click Total Plate Count

➔ Select colony type from the drop-down, either Light or Dark Colonies

## 10 Classification settings

Slide



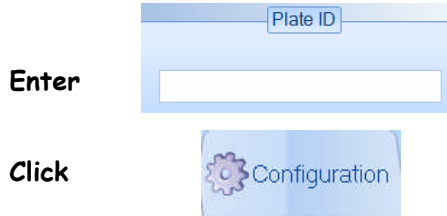
Check

➔ Move slider to the left to adjust the detection sensitivity

➔ Move slider to the left to accept small particles or to the right to exclude small particles

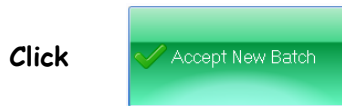
➔ If any colonies are touching, select the Split function

## 11 Enter a plate ID



➔ Enter a plate ID found on Measure tab. Auto-increment default is "on", to change this click on the Configuration tab

## 12 Accept batch



➔ Accept batch

**ProtoCOL 3 is now ready to make the first measurement**

CONTACT SYNBIOSIS:  
EUROPE:  
Tel: +44 (0)1223 727125  
Email: support@synbiosis.com

USA:  
Tel: 800 686 4451/301 662 2863  
Email: support@synbiosis.com

[www.synbiosis.com](http://www.synbiosis.com)  
P30PKABSU1211