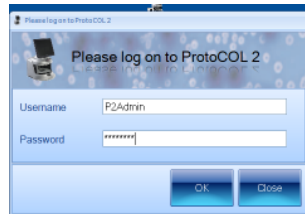


ProtoCOL 2 - Total plate count - Quick Guide

1 Start ProtoCOL 2 software

Enter



➔ Log on to ProtoCOL 2 using the username P2Admin. The password is the ProtoCOL 2 serial number

2 Position plate

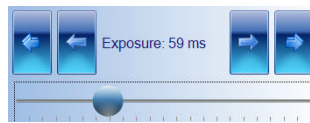
- ➔ Insert the plate holder with the pegs at the back of the unit
- ➔ Place plate on to plate holder pushing it against the locating pins

3 Capture image

Click



Slide



Click



- ➔ Select the Image tab and check the live image box
- ➔ Adjust the exposure by increasing/ decreasing the sliding scale
- ➔ Capture image

4 Create batch

Click



- ➔ Click New Batch

5 Plate configuration

Click



- ➔ Click on Plate Configuration to adjust, defaults are Circular plate 90mm Sample volume 1 ml. Change if necessary

6 Choose plate type

Select



- ➔ Select plate type

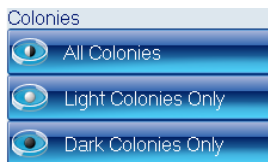
7 Total plate count

Click



➔ Click Total Plate Count

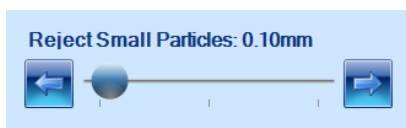
Select



➔ Select colony type from the dropdown, either Light, Dark or All Colonies

8 Classification settings

Slide



➔

Move slider to the left to accept small particles or to the right to exclude small particles

Check



➔

If any colonies are touching select the Split function

9 Enter a plate ID

Enter



➔

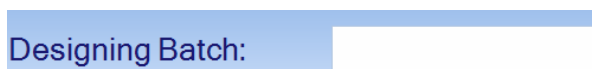
Enter a plate ID found on the Measure tab. Autoincrement default is "on", to change this click on the Configuration tab

Click



10 Name the batch

Enter



11 Accept batch

Click



➔

Accept batch

ProtoCOL 2 is now ready to make the first measurement

CONTACT SYNBIOSIS:
EUROPE:
Tel: +44 (0)1223 727125
Email: support@synbiosis.com

USA:
Tel: 800 686 4451/301 662 2863
Email: support@synbiosis.com

www.synbiosis.com
P2TPC0811