

# ProtoCOL 2 Software Installation Guide

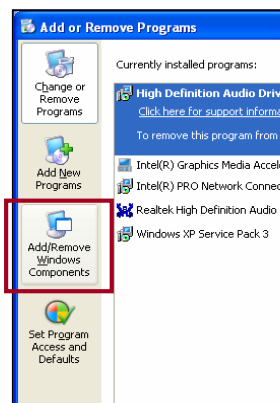
## ■ Requirements

1. The PC on which you wish to install ProtoCOL 2 software **MUST** be running Windows XP Pro.
2. You must be logged on as an administrator.

## ■ Installation

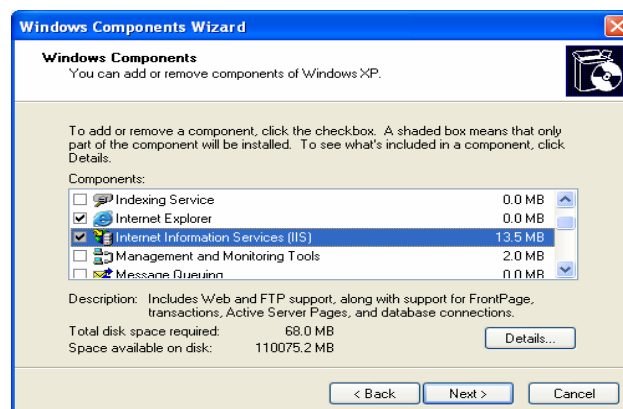
### Windows control panel

1. Depending on whether you have the classic or modern version of Windows XP, click on Windows Start button then for the classic version select settings then control panel. For the modern version select control panel.
2. Once the control panel window has loaded click on 'Add/Remove' programs.
3. From the menu on the left hand side select 'Add/Remove Windows Components'.



### Windows Components window

1. From the drop down list check the box for 'Internet Information Services' and then click Next.



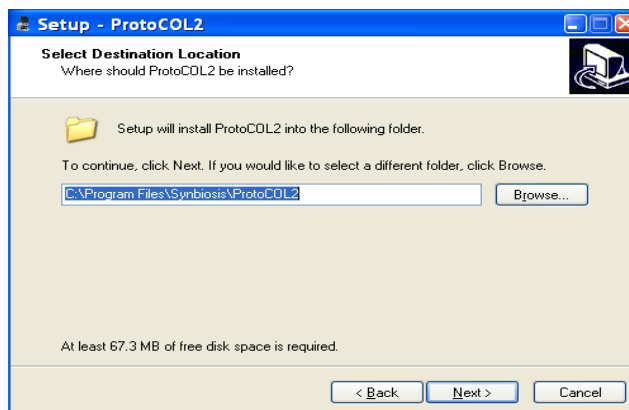
2. Press Finish to close window once installation of this component is complete.
3. Close any other windows which are open.

## Installing ProtoCOL 2 software from CD

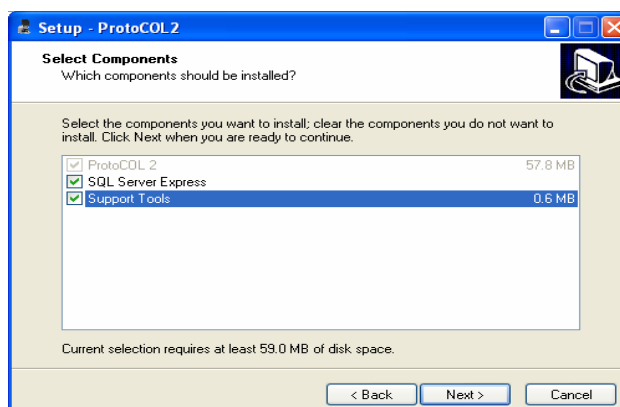
1. Go to Windows Explorer.
2. Insert CD into CD rom.
3. Double click on CD rom to open it in a new window. Then double click on Set-up.exe file and click Next to initialise the Installation wizard.



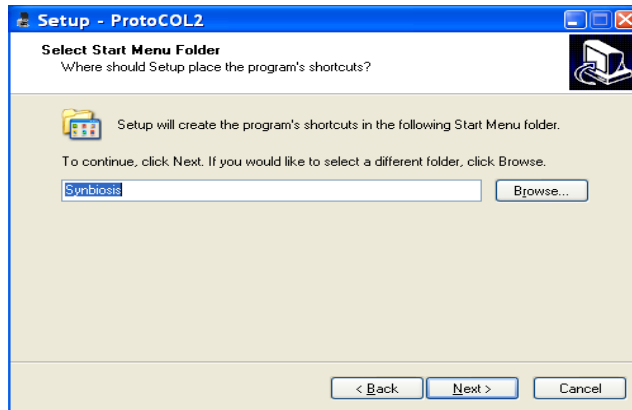
4. In the next window 'Select Destination Location', accept the location highlighted in blue then click Next.



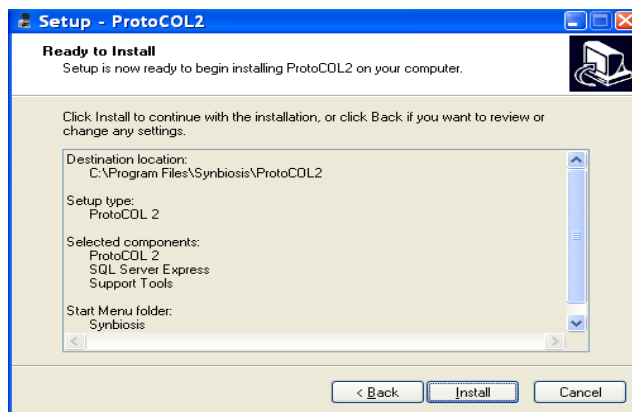
5. In the next window 'Select Components' click to select SQL Server Express and Support Tools. **N.B.** If you already have SQL Server Express only check Support Tools.



6. In the 'Select Start Menu folder' click Next to accept folder name highlighted in blue.

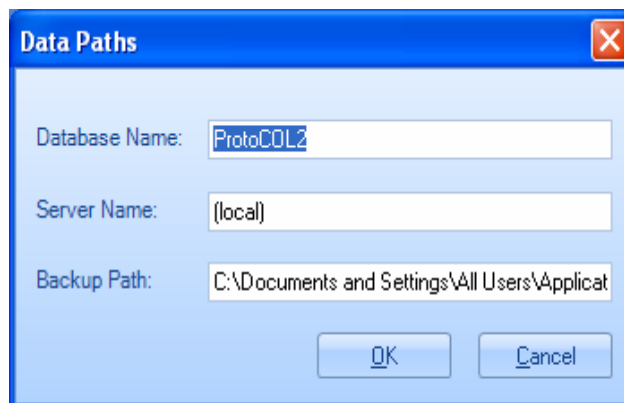


7. The next window 'Ready to Install' check all information is correct before clicking the Install button. **N.B.** The installation may take some time.

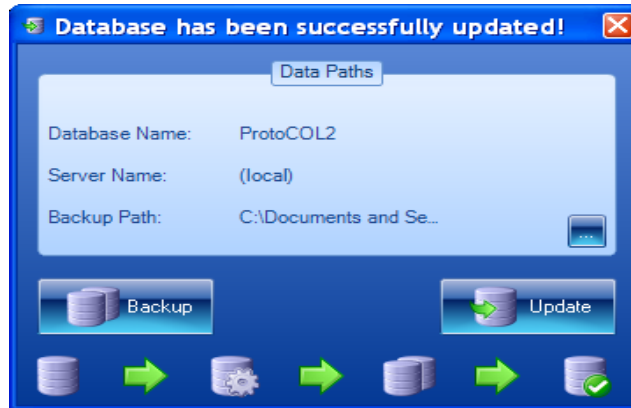


## Data Paths Window

1. Click OK when you reach the 'Data Paths' Window.

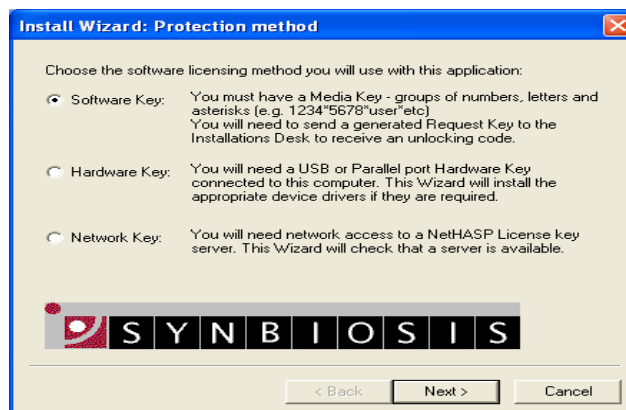


2. When the database has been updated successfully the following window will appear. To close this window click on OK then red cross (X) in the top right hand corner of the window.



### Installing Protection Method

1. To install a software key, you will need to enter a media key which you will find on the inside cover of the CD. Then you will need to follow the on screen instructions.
2. To Install a hardware key, you will need a USB or Parallel port hardware key (Dongle) connected to the computer. **N.B.** Do not plug in the dongle until instructed to do so. Please follow the on screen instructions.

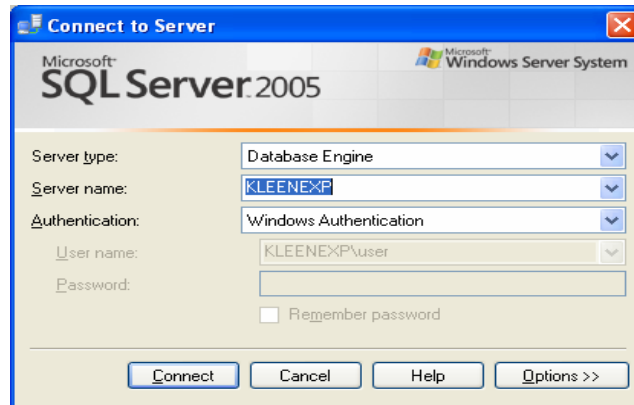


3. In the next window 'Completing the ProtoCOL2 setup wizard' click 'Finish' to exit the setup.
4. This completes the ProtoCOL 2 software installation.

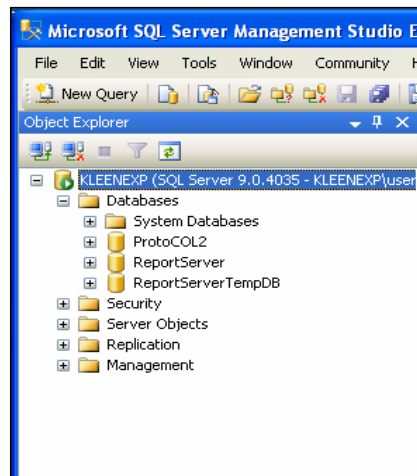
### Setting up the SQL Server 2005

If the machine is a member of a network domain it needs to be connected to the network before or during this connection.

1. Click on Windows 'Start' menu.
2. Then click on 'All programs'.
3. Select 'Microsoft SQL server 2005'. Then click on SQL Server Management studio express.
4. Click on the 'connect' button.



5. From the 'Object Explorer menu' expand using the plus sign (+) the 'Databases' file.

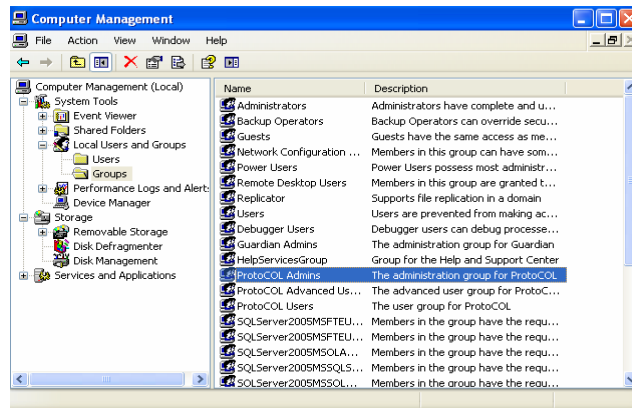


6. Then expand the following files as above 'ProtoCOL2 (+)' and 'Tables (+)'.
7. Scroll down to the file called 'Security Policy' and right mouse click on this file and Select 'Open Table'.
8. In the table select the column 'Authentication' and change the number to 1. To affect this change click in the box below and then close the SQL Server Management Studio Express by clicking on the red cross (X) in the top right hand corner.

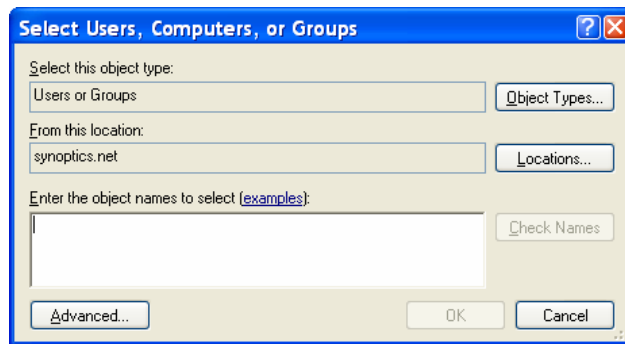
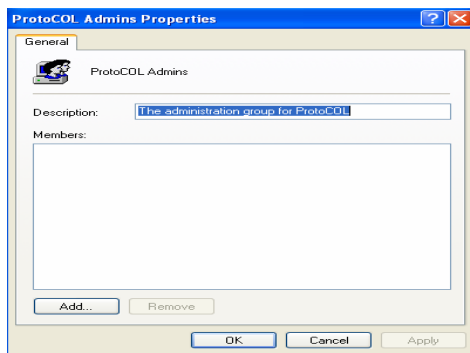
### Adding users to SQL Server

1. The following steps need to be carried out when logged in as an Administrator.
2. When ProtoCOL 2 is installed, three default user groups are created; ProtoCOL Admins, ProtoCOL advanced users and ProtoCOL Users. Every user needs to be a member of one or more of these groups.
3. From the Windows Control panel select Administrative Tools.
4. Then click on Computer Management.

- Expand (+) local users and groups then click on groups



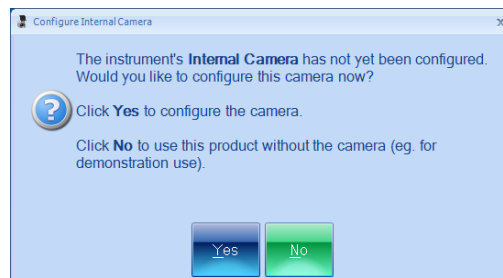
- In the 'ProtoCOL Admins properties' dialog box right click and select 'Add to Group' then click Add to Add Users.
- To add a single user enter their username in the space beneath.



- The new user should now be added to the ProtoCOL Admins group, Click OK
- Close computer management window by clicking red cross (X).
- Log out as Administrator.

## Start ProtoCOL 2 Software

- Double click on ProtoCOL 2 icon from the desktop.
- In the 'Configure Internal Camera' dialog box. Click No to use this product without a camera.



CONTACT SYNBIOSIS:  
EUROPE:  
Tel: +44 (0)1223 727125  
Email: support@synbiosis.com

USA:  
Tel: 800 686 4451/301 662 2863  
Email: support@synbiosis.com

www.synbiosis.com  
PC2IG0410