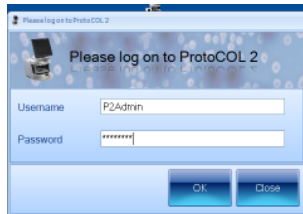


ProtoCOL 2 - Spiral Plates - Quick Guide

1 Start ProtoCOL 2 software

Enter



➔ Log on to ProtoCOL 2 using the username P2Admin. The password is the ProtoCOL 2 serial number

2 Position plate

➔ Insert the plate holder

➔ Place plate on to plate holder pushing it against the locating pins

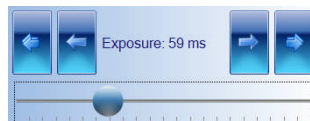
3 Capture image

Click



➔ Select the Image tab and check the live box

Slide



➔ Adjust the exposure by increasing/ decreasing the sliding scale

Click



➔ Capture image

4 Create batch

Click



➔ Click New Batch

5 Plate configuration

Click



➔ Click on Plate Configuration to adjust, Defaults are Circular plate 90mm, Spiral volume 100µl and threshold of 20. Change if necessary

6 Choose plate type

Select

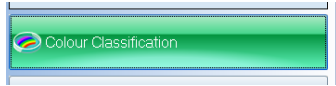


➔ Select plate type

7 Total plate count


Click 

Or



➔ Select Total Plate Count or Colour Classification as per quick guide


8 Enter a Plate ID

Enter 

Click 

➔ Enter a plate ID on the Measure Tab .
Autoincrement default is "on", to change this click on the Configuration tab

9 Name the batch

Enter 

10 Accept batch

Click 

➔ Accept batch

ProtoCOL 2 is now ready to make the first measurement

CONTACT SYNBIOSIS:
EUROPE:
Tel: +44 (0)1223 727125
Email: support@synbiosis.com

USA:
Tel: 800 686 4451/301 662 2863
Email: support@synbiosis.com

www.synbiosis.com
P2SP0811