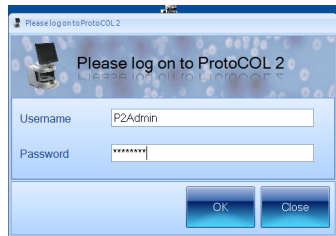


ProtoCOL 2 Antibiotic Susceptibility Testing - Batch set-up Quick Guide

1 Start ProtoCOL 2 software

Enter



➔ Log onto ProtoCOL 2 using the username P2Admin. The password is the ProtoCOL 2 serial number

2 Position plate

➔ Insert the plate holder

➔ Place plate onto plate holder

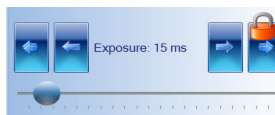
3 Capture image

Click



➔ Select the image tab and check the live box

Slide



➔ Adjust the exposure by increasing/decreasing the sliding scale

Click



➔ Capture image

4 Create batch

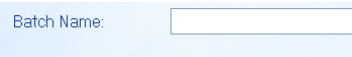
Click



➔ Click Create or Open batch and select Create New Batch

5 Batch name

Enter



➔ Enter Batch Name

Select



➔ Select Zone Measurement

6 Choose plate type

Select



Antibiotic Susceptibility

➔ Select Antibiotic Susceptibility

7 Configure measurement

Select



➔ Defaults are Circular plate 90mm
Sample volume 1ml
Change if necessary

8 Zone Classification

Select



- ➔ Select Zone Classification tab
- ➔ Select type of zone frame and the number of zones required
- ➔ Position the grid directly over the zones
- ➔ Click Next

9 Configure type of analysis

- ➔ Select zone type
- ➔ Click Next

10 Identify zones

Sample



Sample

Sample

- ➔ From Image click on an area of the disc or well to pick colour, repeat for zone and the background. Be sure to take representative samples from across the plate
- ➔ Click Next

11 Review zone measurements

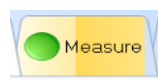
Click



- ➔ If all zones are detected click Finish, if not repeat step 8 and ensure all of the zones are central

12 Measure

Click



- ➔ Select Measure tab

Click



- ➔ Test Measure Plate
- ➔ Assign a plate identification template name

Click



- ➔ Accept batch

ProtoCOL 2 is now ready to make the first measurement

CONTACT SYNBIOSIS:
EUROPE:
Tel: +44 (0)1223 727125
Email: support@synbiosis.com

USA:
Tel: 800 686 4451/301 662 2863
Email: support@synbiosis.com

www.synbiosis.com
P2ASTBSU0810