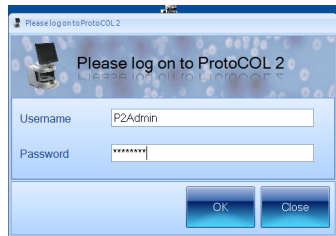


# ProtoCOL 2 Ames - Batch set-up Quick Guide

## 1 Start ProtoCOL 2 software

Enter



➔ Log onto ProtoCOL 2 using the username P2Admin. The password is the ProtoCOL 2 serial number

## 2 Position plate

➔ Insert the plate holder

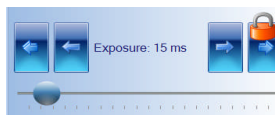
➔ Place plate onto plate holder pushing it against the locating pins

## 3 Capture image

Click



Slide



Click



➔ Select the image tab and check the live box

➔ Adjust the exposure by increasing/ decreasing the sliding scale

➔ Capture image

## 4 Create batch

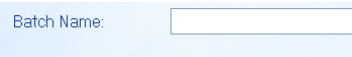
Click



➔ Click Create or Open Batch and select Create New Batch

## 5 Batch name

Enter



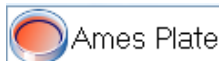
Select



➔ Enter Batch Name

➔ Select Colony Counting

## 6 Choose plate type



➔ Select Ames Plate

## 7 Configure measurement



➔ Defaults are Circular plate 90mm  
Sample volume 1 ml  
Change if necessary

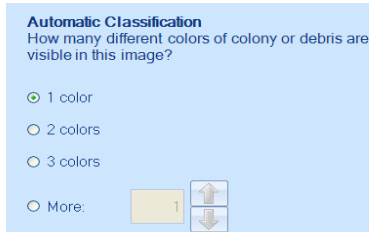
## 8 Colour classification

Select



➔ Select Colour Classification tab

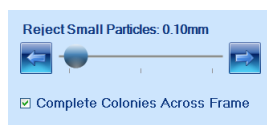
Select



➔ Automatic Classification default is 1 colour. If a total count is required keep 1 colour selected. If differentiation by colour is required select how many different colours are present on the plate

## 9 Classification results

Slide



➔ Move slider to the left to accept small particles or to the right to exclude small particles

Check

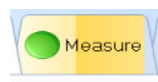


➔ If any colonies are touching select the Split function

➔ Click Finish

## 10 Measure

Select



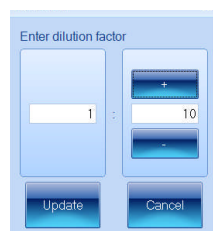
➔ Select the Measure tab

Select



➔ Add dilution by selecting the 1:1 box

Select



➔ Edit the dilution factor by either clicking the +/- buttons or typing directly into text box

Click



➔ Test Measure Plate

➔ Assign a plate identification template name

Click



➔ Accept batch

**ProtoCOL 2 is now ready to make the first measurement**

CONTACT SYNBIOSIS:  
EUROPE:  
Tel: +44 (0)1223 727125  
Email: support@synbiosis.com

USA:  
Tel: 800 686 4451/301 662 2863  
Email: support@synbiosis.com

[www.synbiosis.com](http://www.synbiosis.com)  
P2AmesBSU0810