

Adding a ProtoCOL 2 user - Quick Guide

When ProtoCOL is installed, three default users groups are created:

ProtoCOL Admins
ProtoCOL Advanced Users
ProtoCOL Users

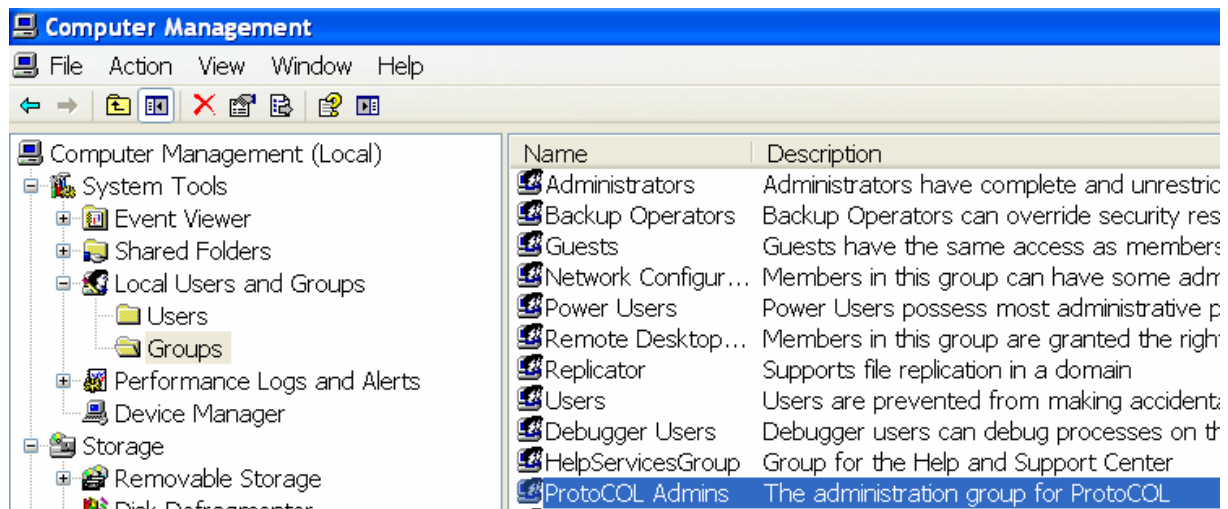
Every ProtoCOL user needs to be a member of one or more of these groups

1 Log onto system as administrator

➔ Log onto the system as an administrator by pressing Ctrl,Alt,Delete twice. Enter the username Administrator and use the same password as the P2Admin account

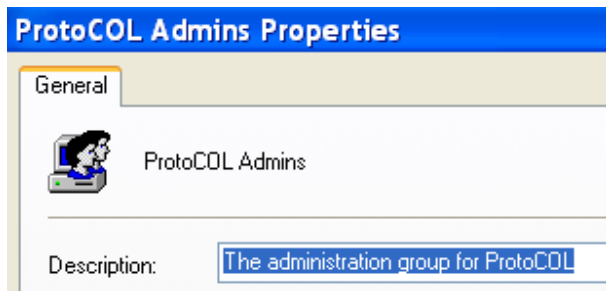
2 Add a user to ProtoCOL Admins group

➔ Locate ProtoCOL Admins group, by clicking on the control panel and double-clicking Administrative Tools followed by Computer Management. Expand Local Users and Groups and click on Group folder



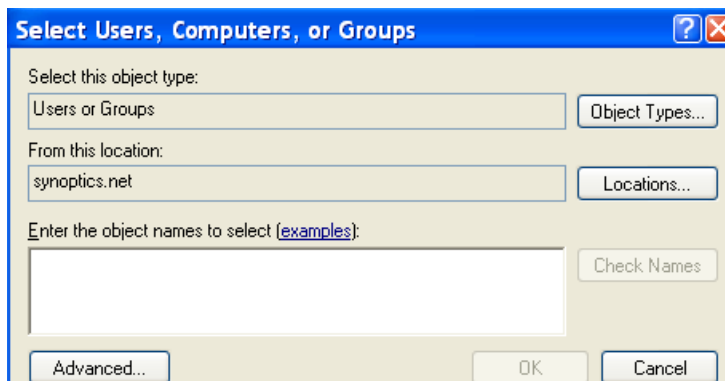
➔ Double-click the ProtoCOL Admins group

3 Add a single user



Add...

➔ Click Add

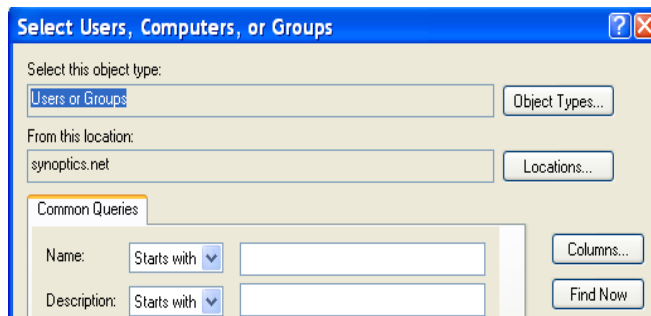


To add a single user, enter their username in the box labelled "Enter the object names to select" and click Check Names. Click OK to return to the ProtoCOL Admin Properties Dialog and the user has been added to the ProtoCOL Admins group

4 Add a group of users

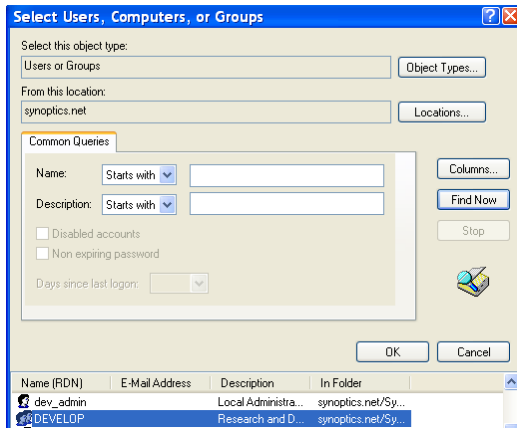
Advanced...

➔ To add a group of users to a ProtoCOL group click Advanced on the page entitled "Select Users, Computers or Groups"

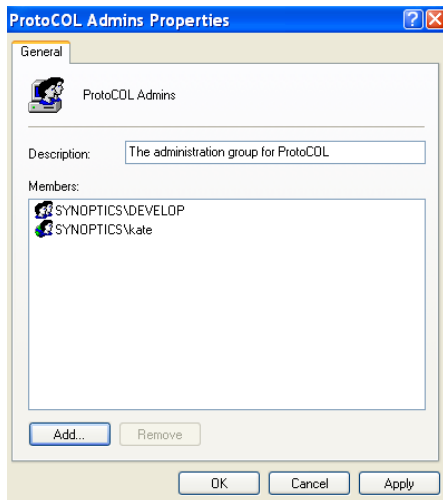
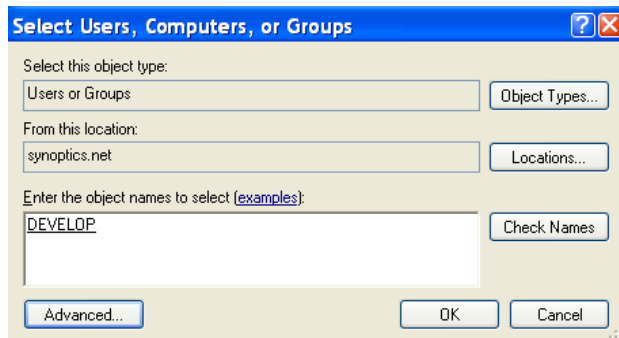


➔ Then click Find Now

4 Add a group of users (cont...)



➔ Select the group you want to add and click OK



CONTACT SYNBIOSIS:
EUROPE:
Tel: +44 (0)1223 727125
Email: support@synbiosis.com

USA:
Tel: 800 686 4451/301 662 2863
Email: support@synbiosis.com

www.synbiosis.com
P2U0211